

# Disqualifying Conditions

## Drum Return Standards

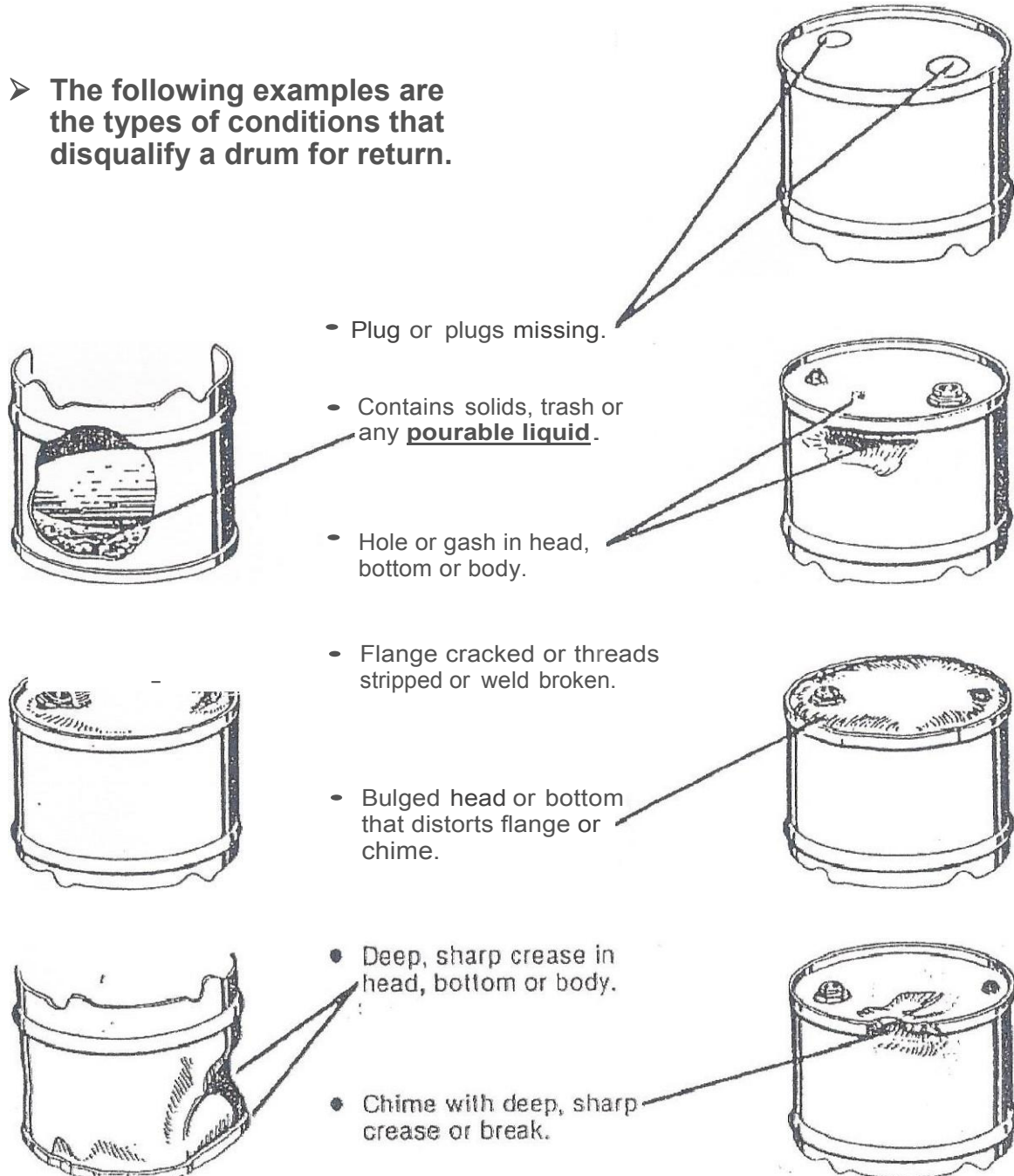
For pick-up and deposit refund or credit, an emptied drum must meet the standards shown below:

1 The drum plugs must be in place.

2 The drum must not contain solids, trash, or any pourable liquid.

3 The drum must be reconditionable

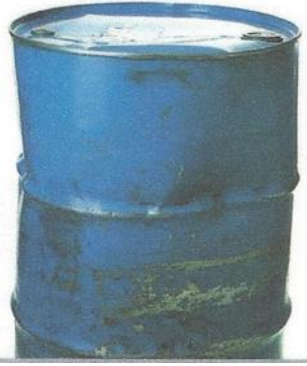
➤ The following examples are the types of conditions that disqualify a drum for return.



# UNACCEPTABLE DRUMS FOR RETURN



**EXCESSIVE CORROSION**



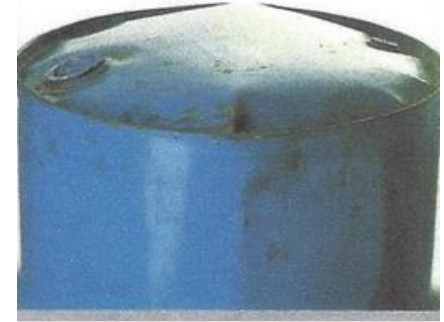
**EXCESSIVE BODY DAMAGE  
(Bent Roll Hoop)**



**DISTORTED UPPER RING**



**DISTORTED TOP**



**DISTORTED TOP**



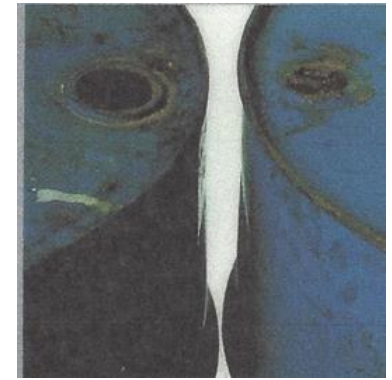
**DISTORTED BASE RING**



**PLUGS NOT IN PLACE**



**BUNGS DAMAGED**



**PLUGS MISSING OR DAMAGED**



**BUNGS OR PLUGS DAMAGED**



**PUNCTURE OR TEAR**